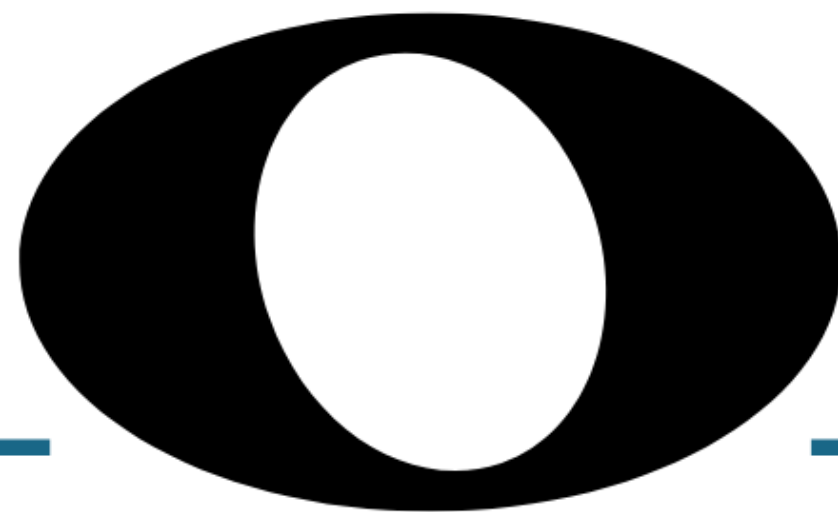




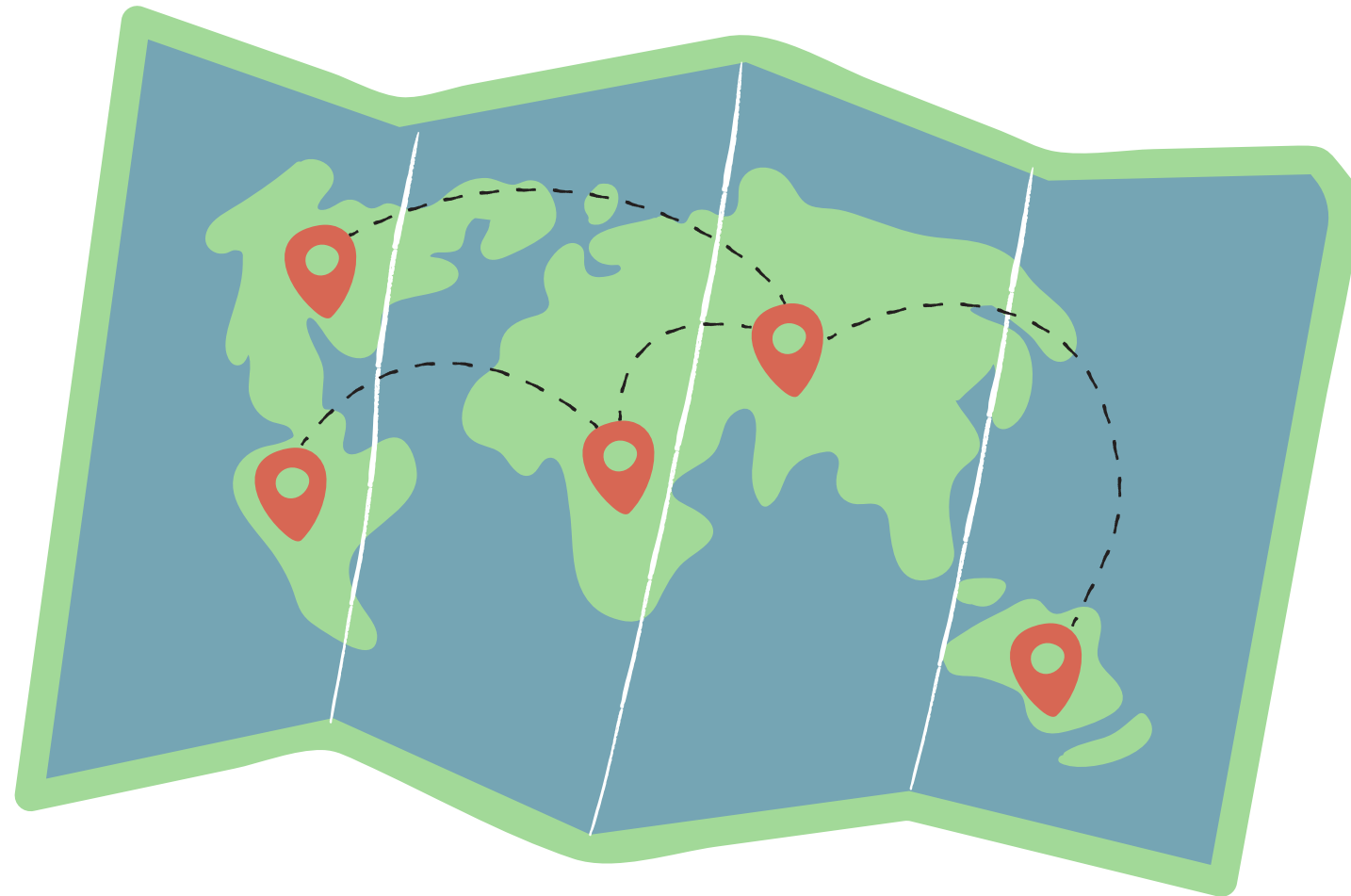
**COMMITTEE  
OF THE  
WHOLE**



September  
12,  
2023



Meeting Map  
Committee of the Whole  
September 12, 2023



ACKNOWLEDGEMENT OF TERRITORIES

MEETING GUIDELINES

RISE UP CAMPAIGN

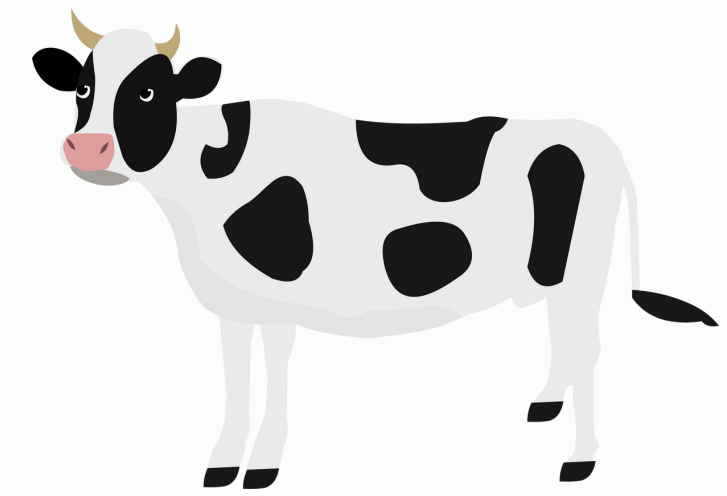
NIC ACCESSIBILITY REPORT

REFERENDUM FALL 23



North Island Students' Union is honoured to acknowledge territories of the combined 35 First Nations; Nuu-chah-nulth, Kwakwaka'wakw and Coast Salish peoples, on whose unceded lands we learn, live and play





# September 12

## Committee of the Whole

### **Hyflex Meeting guidelines**

Mute your microphone, unless you're speaking.

Avoid cross talking in the room, it makes it hard for online participants to hear.

Don't feel like you need to apologize for being muted while speaking,  
nor the time it takes to unmute.

We are all in this together.

Feel free to turn off your camera, while the team is presenting,  
please have it on during discussion of the meeting, where possible.

Use the raise your hand function in BlueJeans to help the meeting move smoothly.





September 12

### **Meeting guidelines**

All members of NICs College Community are bound by our Community Code of Conduct.

Please act with diligence and the safety of your fellow member in mind.

While in a NISU space, there is no time for inappropriate language.

Please act in a professional & respectful manner.

*North Island College is a vibrant community involved in teaching, learning, applied research, and other educational activities. The college is committed to fostering a culture of integrity, mutual respect, and responsible behaviours to provide a welcoming, safe, and inclusive environment for all.*



*Policy and Procedures Manual*



|                                   |  |
|-----------------------------------|--|
| <b>Policy</b>                     | #3-06                                      |
| <b>Approved By:</b>               | Education Council                          |
| <b>Approval Date:</b>             | November 13, 2015                          |
| <b>Revision Date:</b>             | November 13, 2015<br>May 12, 2018          |
| <b>Effective Date:</b>            | May 12, 2018                               |
| <b>Date to be Reviewed:</b>       | 2023                                       |
| <b>Administrator Responsible:</b> | Executive Vice President<br>Academic & COO |

**COMMUNITY CODE OF ACADEMIC, PERSONAL AND  
PROFESSIONAL CONDUCT (CODE OF CONDUCT)**

*To find the Community Code of Conduct, find policy 3-06 on NICs website.*

If anything in a NISU space leaves you feeling uncomfortable please reach out to Carissa, [wilson@nisu.ca](mailto:wilson@nisu.ca) or whomever you are most comfortable disclosing to.

We will support you.



# RISE UP

Tuition fees are too damn high.

International student tuition fees are unregulated and unfair, and can increase by any amount, at any time.

The average student in British Columbia owes \$28,000 in student loan debt upon graduation.

*Students deserve an education, not debt.*

**TOGETHER, WE CAN RISE UP FOR STUDENTS.**



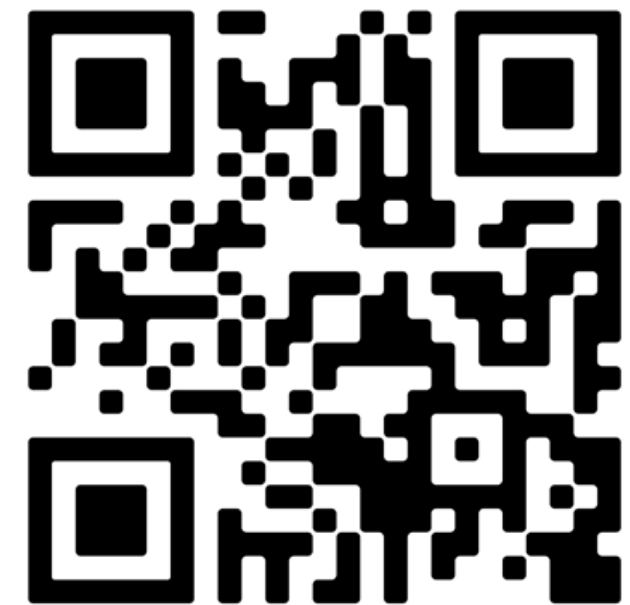


Education is a right, but unfortunately post-secondary education is becoming increasingly inaccessible for those who need it the most.

It is up to us to fight for a reduction in tuition fees for all, the regulation of international tuition fee increases and more financial aid. This is all possible if the government prioritizes funding B.C.'s post-secondary education system.

Join us in calling on the government to step up and properly fund our institutions, and to reduce tuition fees.

Let's fight for affordable education and **RISE UP** for students.







# RISE UP

2 → What are your top three concerns as a student?\*

Choose as many as you like

A Cost of living (rent, groceries, inflation etc)

B Cost of tuition fees

C Lack of affordable rentals

D Lack of (or unaffordable) on-campus housing

E Transit availability or cost

F State of health care

G Lack of jobs / economy

Submit

bcfs





# RISE UP

Rise Up campaign is all about how education is too expensive, especially for our international members.

We will be aiming to get other students to sign up and create some buzz.

Can you think of interesting ways to bring cost of education and equity to the attention of the public, the institution, other students, and the media?

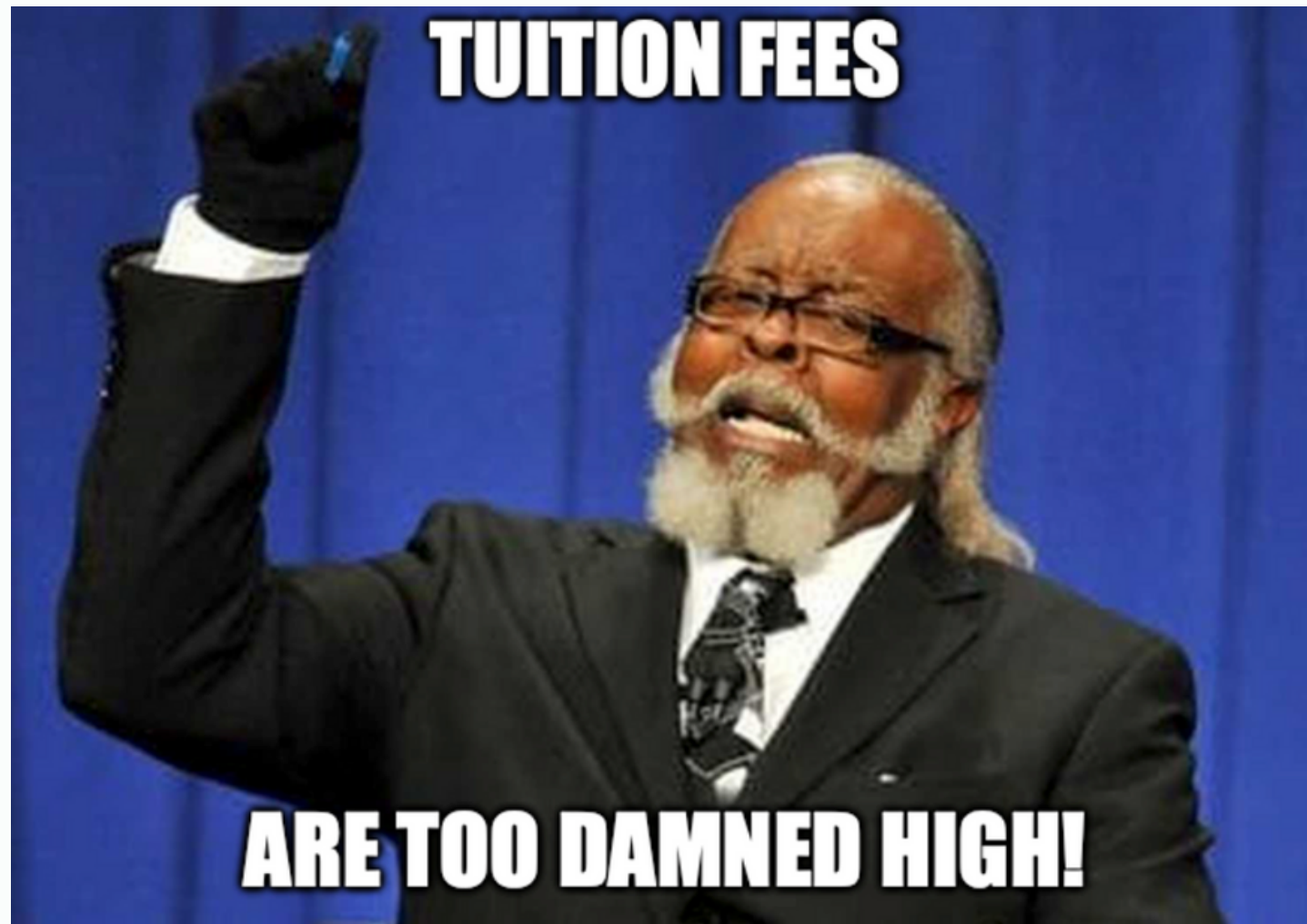
How would you like to share this campaign?

What would grab your attention?





# RISE UP



- I wasn't playing games, rent is too damn high.



NORTH ISLAND COLLEGE  
**ACCESSIBILITY PLAN**  
2023 - 2026



# Referendum Fall 2023

There will be two resolutions.

Are you in favour of increasing membership fees of North Island Students' Union by \$1 per month?

Are you in favour of adding a North Island Students' Union Spaces Fee to all members, excluding those at Mixalakwa (Port Hardy) campus, of \$0.50 per month?

As NISU has online learners as well as four campuses and a learning centre with members, the referendum would be delivered via email to all members.





# Fall 2023 Referendum

| NISU Provides                                 | Current        | Future                      |
|---|----------------|-----------------------------|
| Clubs   | Yes            | Yes More, with more support |
| Deals App                                     | Yes            | Yes More, with more support |
| Evening events                                | No             | Yes                         |
| Executive Director                            | Yes            | Yes                         |
| Free fruit and Snacks                         | Yes            | Yes More, with more support |
| Food events                                   | 1 per semester | More                        |
| Health and Dental                             | Yes            | Yes                         |
| Free lockers K'ómoks Valley                   | Yes            | Yes                         |
| Lobbying Governments for affordable education | Yes            | Yes                         |
| Membership at BCFS                            | Yes            | Yes                         |
| Organiser, Advocacy                           | Yes            | Yes                         |
| Organiser, Services                           | Yes            | Yes                         |
| Port Alberni Staff Member                     | No             | Yes                         |
| Staff, Communications                         | No             | Yes                         |
| Student advocacy at NIC                       | Yes            | Yes                         |
| Yoga  | Yes            | Yes                         |



We will be talking to students about this exciting referendum.

It's part of your role to talk about it too!

If we don't get enough votes in favour of this then our dreams of providing food services will be crushed for the time being along with the growth of NISU being hampered without money to support our office spaces on campus.

Questions?

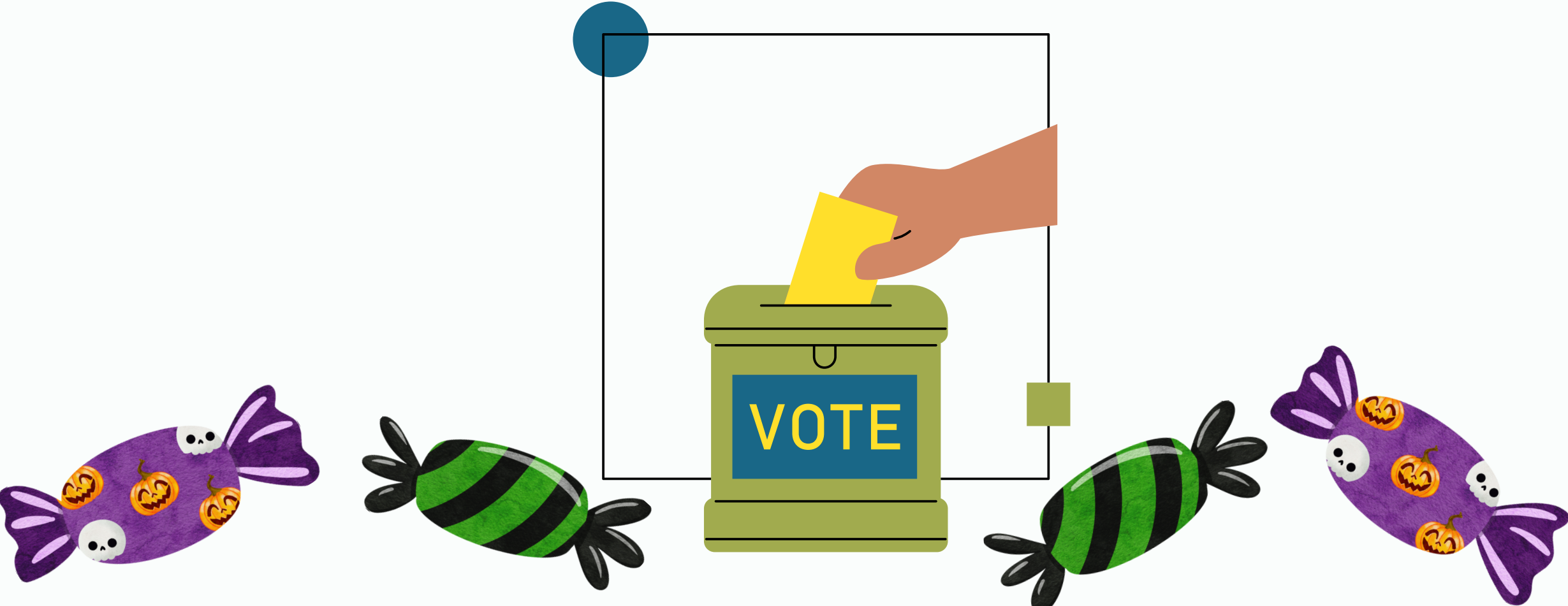




# Timeline for the referendum based on Bylaws.

Call referendum October 16

Voting days October 31, November 1 & 2.





# Halloween/Referendum events

October 31

Concurrent events:

Campbell River

Courtenay

Port Alberni

Mixalakwa? l



Pumpkin Carving

Voting

Candy

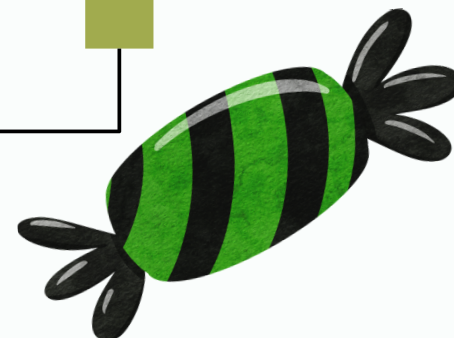
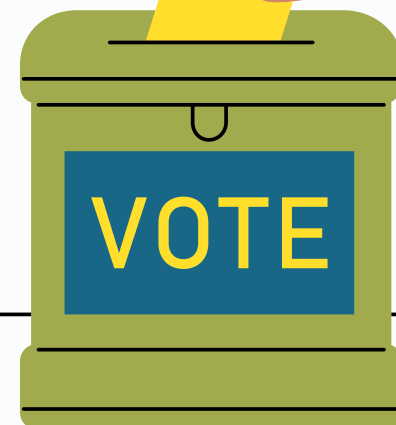
???

Movie night in

Stan Hagen?

Popcorn &

voting?

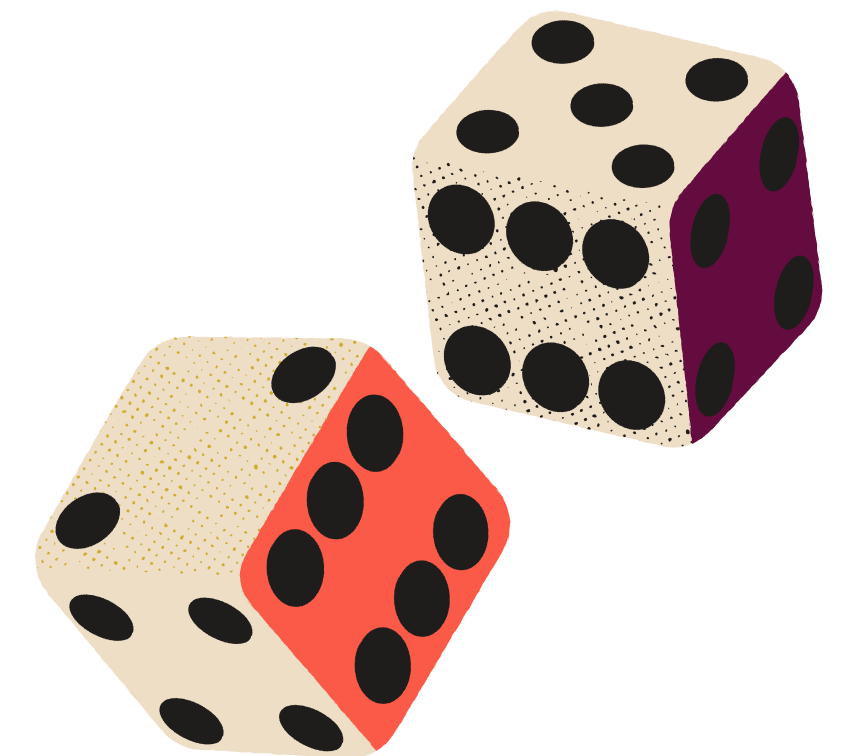
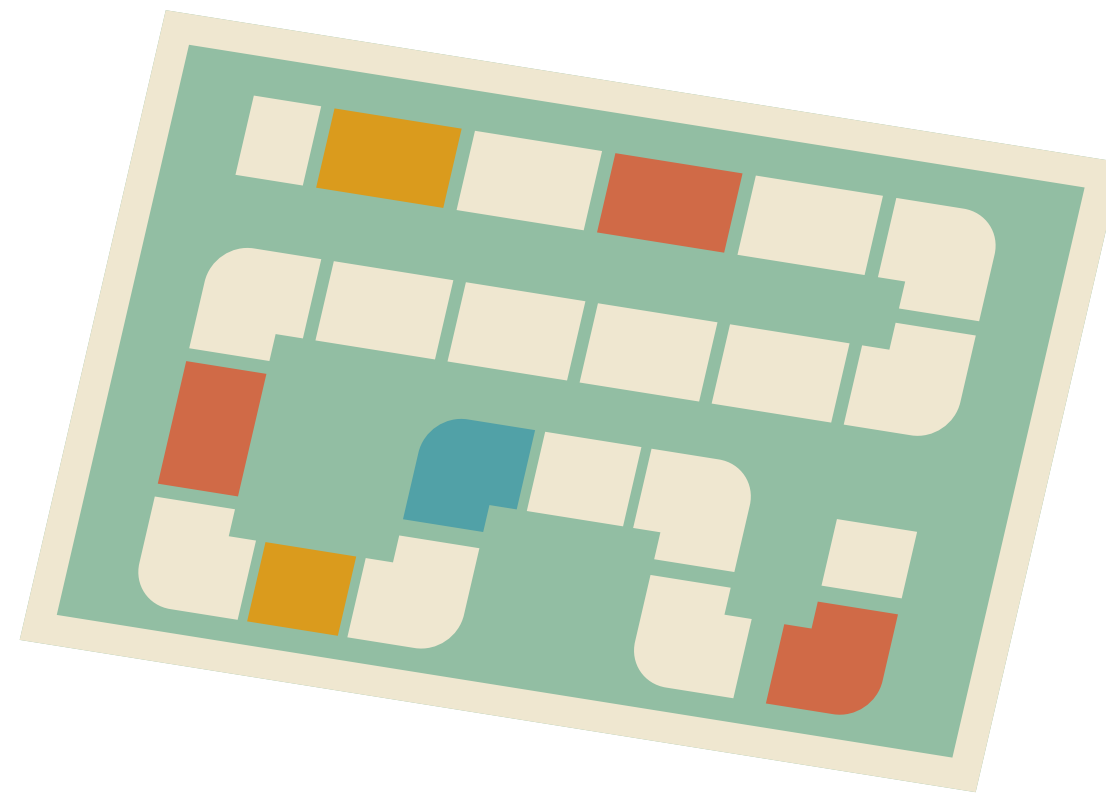
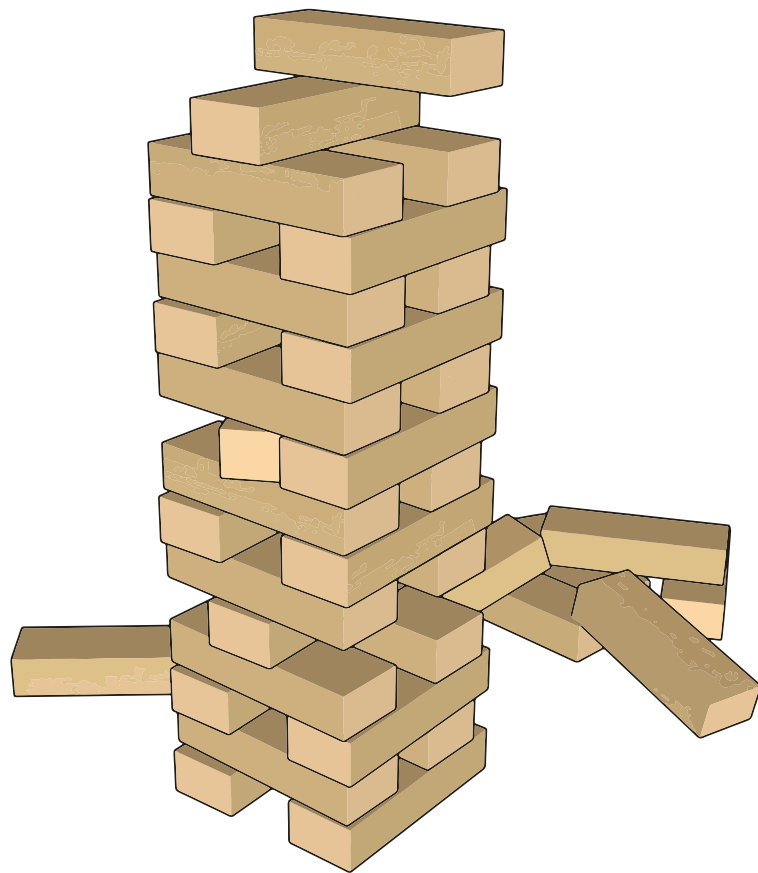






At Orientation we had a sheet of sign ups for a games night which got a lot of interest. They will be run every second Tuesday on nights we don't have meetings.

Want to come!







# PRIDE CLUB

PRIDE is looking for a new manager. NISU will host a club meeting in early October. If you identify with the PRIDE community and want to help with organising, please connect with staff.





**Policy  
Review  
Committee**

**Monday September 18**

3:00

In our new office! If it's not ready we will have a room at the library on KV Campus



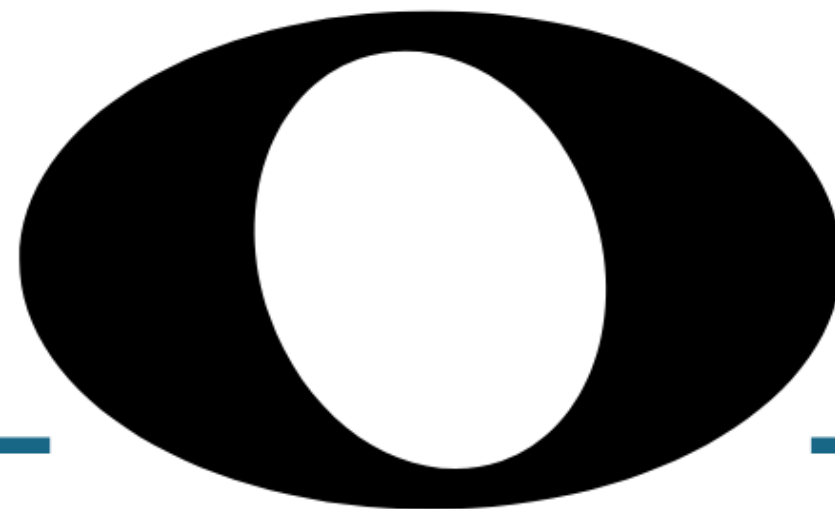
# 2023 September

Here we go!  
It is such an exciting time and we are looking forward to all the events and community building opportunities we have together in September. Please let staff know which events you can attend!

| Monday  | Tuesday  | Wednesday  | Thursday  | Friday |
|---|--|--|---|--------|
| 4<br><br>College and NISU closed                         | 5<br><b>First day of fall semester</b>   | 6<br><b>Campbell River Orientation</b><br>11 - 1:30<br> | 7<br><b>Courtenay Orientation</b><br>11 - 1:30<br>   | 8      |
| 11<br><b>Port Alberni Orientation</b><br>11 - 1:30<br> | 12<br>Online Orientation<br>12:30 - 1:30<br>Committee of the Whole<br>5 pm   | 13   | 14<br><br>Yoga, online every Thursday<br>4:30 - 5:30 | 15     |
| 18<br><b>Policy Committee</b><br>3  | 19<br><b>Courtenay Welcome!</b><br> | 20   | 21<br><b>Campbell River Welcome!</b><br>           | 22     |
| 25  | 26<br>Site Blessing<br>10:00-12:30<br>Board of Directors<br>5 pm   | 27<br><b>Port Alberni Welcome!</b><br>                | 28  | 29     |



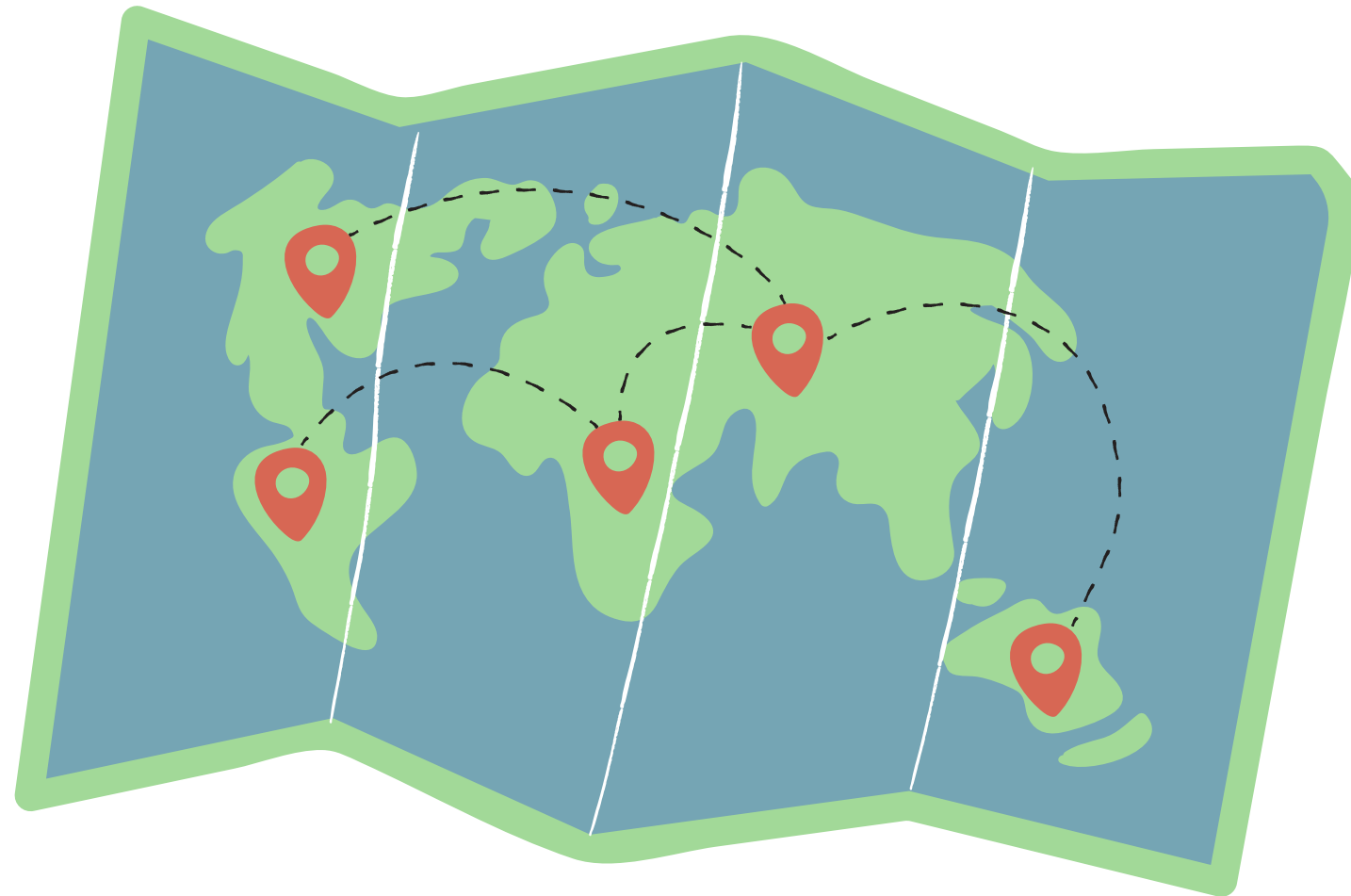
**COMMITTEE**  
**OF THE**  
**WHOLE**



October 17  
5:00



Meeting Map  
Committee of the Whole  
October 17, 2023



ACKNOWLEDGEMENT OF TERRITORIES  
MEETING GUIDELINES  
GUEST, AARON FRANK  
REFERENDUM  
REFERENDUM  
REFERENDUM





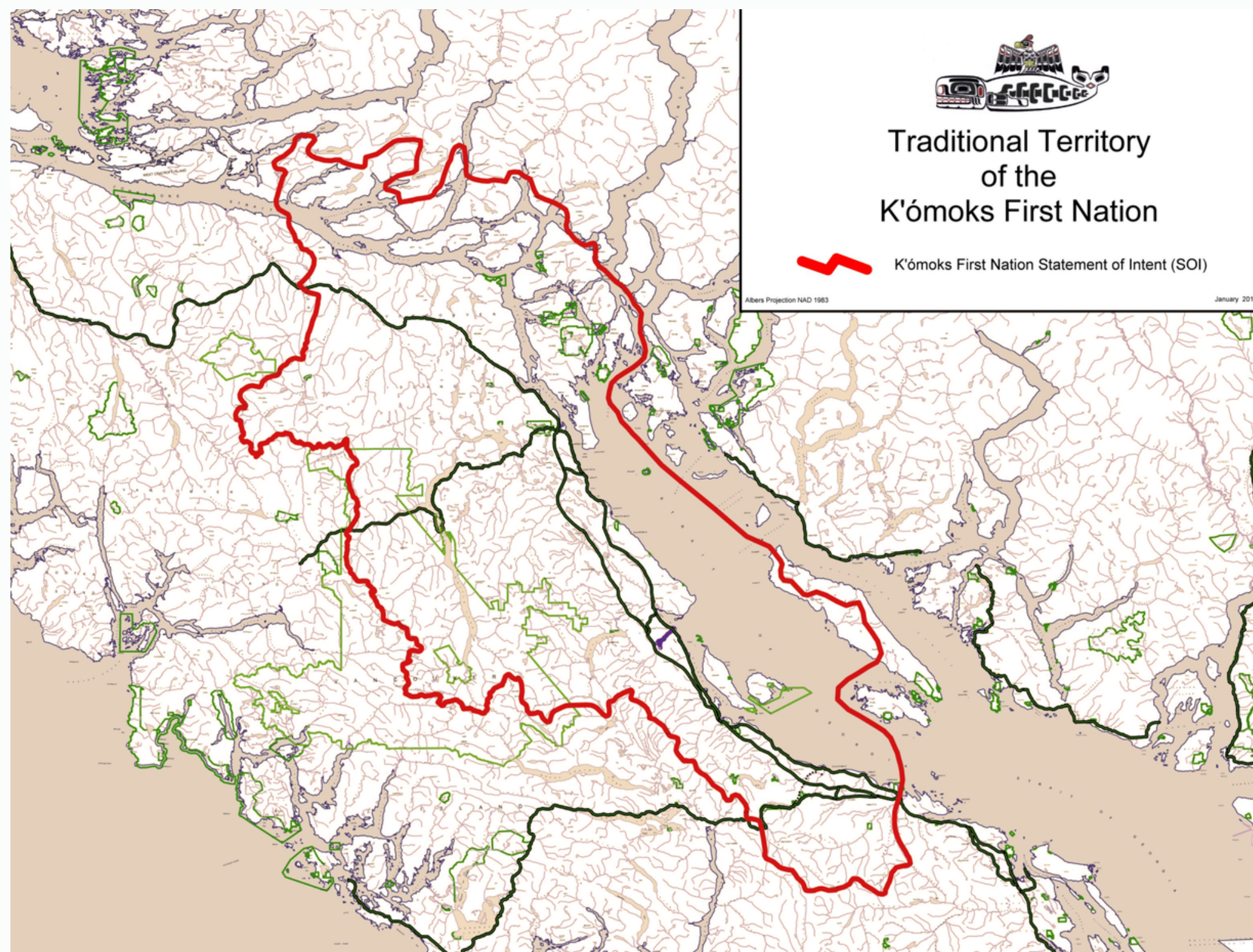
North Island Students' Union is honoured to acknowledge territories of the combined 35 First Nations; Nuu-chah-nulth, Kwakwaka'wakw and Coast Salish peoples, on whose unceded lands we learn, live and play







For thousands of years indigenous people occupied the shoreline of eastern Vancouver Island in a place referred to as “the land of plenty”. This Land of Plenty stretched from what is known today as Kelsey Bay in the north, down to Hornby and Denman Island in the south, and included the watershed and estuary of the Puntledge River. The people called K’ómoks today referred to themselves as Sahtloot, Sasitla, leeksun and Puntledge. They lived in Salmon River, Quinsam and Campbell Rivers, Quadra Island, Kye Bay, Comox Harbour and estuary, Baynes Sound, and many other locations throughout the territory.







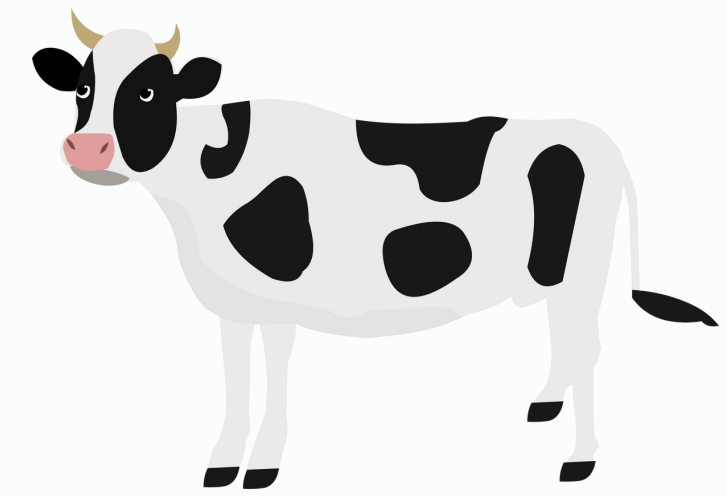
Our Vision: We, the K'ómoks people, envision a prosperous and healthy Nation, in which we exercise our rights and title throughout our territory, honouring our people, lands, waters, cultures and languages.

Our Mission: K'ómoks First Nation ensures the well-being and self-sufficiency in all aspects of our Nation by asserting our rights and title while upholding our members.

(K'omoks.ca. 2023)



October 17  
Committee of the Whole



**Hyflex Meeting guidelines**

Mute your microphone, unless you're speaking.

Avoid cross talking in the room, it makes it hard for online participants to hear.

We are all in this together.

Text 778 348 6478 for tech support

Feel free to turn off your camera, while the team is presenting,  
please have it on during discussion of the meeting, where possible.

We may try a fancy new move where we try to run Teams and Bluejeans at the same time so  
students can join us.

Use the raise your hand function in Teams to help the meeting move smoothly.





October 17

### **Meeting guidelines**

All members of NICs College Community are bound by our Community Code of Conduct.

Please act with diligence and the safety of your fellow member in mind.

While in a NISU space, there is no time for inappropriate language.

Please act in a professional & respectful manner.

*North Island College is a vibrant community involved in teaching, learning, applied research, and other educational activities. The college is committed to fostering a culture of integrity, mutual respect, and responsible behaviours to provide a welcoming, safe, and inclusive environment for all.*



*Policy and Procedures Manual*



|                                   |  |
|-----------------------------------|--|
| <b>Policy</b>                     | #3-06                                      |
| <b>Approved By:</b>               | Education Council                          |
| <b>Approval Date:</b>             | November 13, 2015                          |
| <b>Revision Date:</b>             | November 13, 2015<br>May 12, 2018          |
| <b>Effective Date:</b>            | May 12, 2018                               |
| <b>Date to be Reviewed:</b>       | 2023                                       |
| <b>Administrator Responsible:</b> | Executive Vice President<br>Academic & COO |

**COMMUNITY CODE OF ACADEMIC, PERSONAL AND  
PROFESSIONAL CONDUCT (CODE OF CONDUCT)**

*To find the Community Code of Conduct, find policy 3-06 on NICs website.*

If anything in a NISU space leaves you feeling uncomfortable please reach out to Rebecca or whomever you are most comfortable disclosing to.

We will support you.



## **What?**

North Island Students' Union (NISU) has called a referendum to seek student opinion about a proposed increase to base membership fees and the addition of a Spaces Fee.

## **When?**

These proposed changes would begin September 2024.

Info is live as of yesterday

Referendum Voting Days: October 31, November 1 & November 2

## **Who?**

All NISU members are eligible voters, including digital learners and students based at all NIC campuses

## **Why?**

Increase resource for students. Increase access to affordable, healthy food. Provide room of the Union to continue growing

## **Where?**

Ballots will be delivered by email to @northislandcollege.ca address







# REFERENDUM 2023

## North Island Students' Union is calling a referendum to seek opinion about proposed changes to the membership fee structure:

North Island Students' Union (NISU) is calling a referendum to seek student opinion about a proposed increase to base membership fees and the addition of a Spaces Fee.

A referendum is when the members of an electorate body, in this case the members of NISU (all credit earning NIC students), are asked to vote for a proposed financial change.

The NISU Board of Directors, fellow students elected to represent students, have voted to bring this forward for consideration.

### These proposed changes would begin September 2024

North Island Students' Union is the recognized voice for all credit earning students at North Island College.

NISU represents the students voice to the college, local, provincial, and federal governments and the community. **NISU is led by a Board of Directors, six students elected each spring to represent students.** NISU has three staff members to support the service delivery, governance and community building of the Students' Union.

### All NISU members are eligible voters, including digital learners and students based at all NIC campuses. Voting will be October 31, November 1 & November 2.

Voting will be available through digital means so wherever you are, your vote will be counted. Participating in this referendum is a way that you can help future students, by helping to grow the services of the Students' Union.

Since 1991, North Island Students' Union has been using offices provided by North Island College. While the cooperation has been appreciated all these years, at the largest campus this has left the Students' Union with small spaces. Small working spaces undermine the collaborative work of the Students' Union. Elected students and staff need space to work on projects, host meetings, meet with students, manage and host clubs and more.

### The more space the Students' Union has, the more space students have.

It's common for Students' Unions to have spaces with a variety of uses; offices for Board & staff, meeting spaces, club rooms, storage for event items, event space. In order for NISU to get to a place where it can afford to lease or own spaces, it must start saving funds, now. Starting savings now means future students will have improved access to support and services of the Students' Union

#### Referendum Question #1 of two.

## Are you in favour of implementing a Spaces Fee, of \$0.50 per credit?



Questions or comments? [theoffice@nisu.ca](mailto:theoffice@nisu.ca)



# REFERENDUM 2023



North Island Students' Union is funded entirely by fees from students, paid to the Union during enrolment. This ensures the Students' Union is independent from the college.

### Current fees are \$4.64 per credit.

These fees pay for the operations of the Students' Union; planning & hosting events, providing food on campus, emergency food supports, production of day planner/handbook, bulk purchase of school supplies like notebooks, pens, pencils, highlighters and more, compensating elected students who contribute time to the Students' Union, advocacy services, finding discount providers in communities, ensuring the student voice is considered in college decisions, representing students at local council meetings, holding the provincial government to account for declining funding, advocating for students' rights to the federal government and more.

North Island Students' Union has the opportunity to move into food services at the Port Alberni campus. The onsite cafeteria has been vacant for several years, leaving students without any food or beverage services on campus. The Students' Union can operate a food service business, like a cafe, as a service, providing coffee & tea, breakfasts and lunches at cost to students, the campus community as well as the wider Port Alberni community. The college has agreed to rent the kitchen to the Students' Union and the service can be operated by one full time staff member, with support from existing Students' Union staff. Staff of the Students' Union are unionized with Local 2020 Construction, Maintenance and Allied Workers Canada. The addition of a union position would have great impact on the community. The service would be culturally inclusive, cost efficient, accessible and caring.

Vending machines on campuses are owned by outside companies with high prices, and poor selection, especially in the summer, when they are most needed. The Students' Union could own and operate vending on campuses, instead.

Adding these new services would need more staff hours as well as more resources, which means a modest increase to base fees is necessary to afford these changes.

### Referendum Question

## Are you in favour of increasing base membership fees by \$1 per credit?

### Referendum Voting Days

### October 31, November 1 & November 2

Ballots will be delivered by email, to your [@northislandcollege.ca](mailto:@northislandcollege.ca) address.

Email [theoffice@nisu.ca](mailto:theoffice@nisu.ca) with questions or comments.





## Messaging

Union membership is a privilege many don't understand they have.

Let's go over the benefits of membership again.

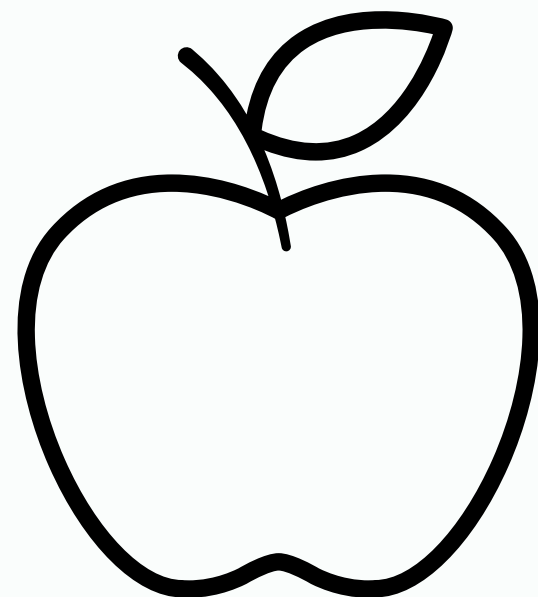
Our three pillars of work

### Services

H & D

Deals App

Fruit and Granola bars

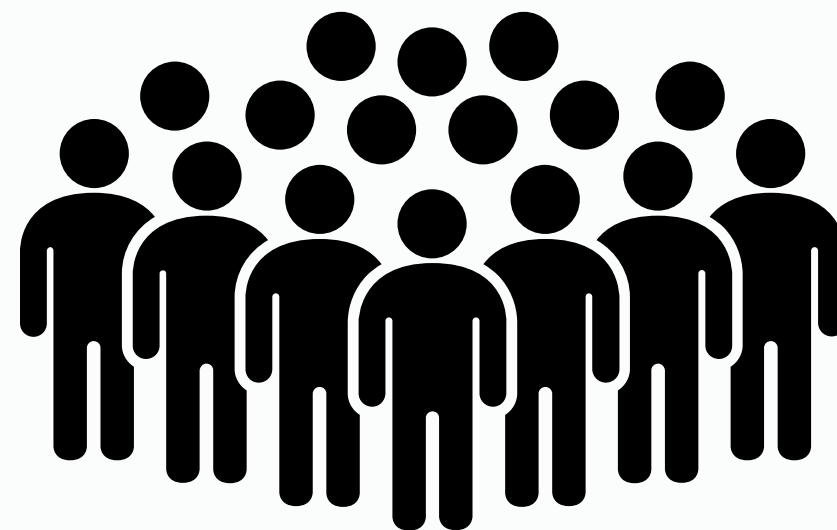


### Community

Food events

Social events

Clubs



### Advocacy

Student advocacy

lobbing Government

Equity and inclusion





Are you in favour of implementing a Spaces Fee,  
of \$0.50 per month?

**The more space the Students' Union has, the more space  
students have.**

It's common for Students' Unions to have spaces with a variety of uses; offices for Board & staff, meeting spaces, club rooms, storage for event items, event space. In order for NISU to get to a place where it can afford to lease or own spaces, it must start saving funds, now. Starting savings now means future students will have improved access to support and services of the Students' Union







Are you in favour of increasing base membership fees  
by \$1 per credit?

**Current fees are \$4.64 per credit.**

North Island Students' Union has the opportunity to move into food services at the Port Alberni campus. The onsite cafeteria has been vacant for several years, leaving students without any food or beverage services on campus.

The Students' Union can operate a food service business, like a cafe, as a service, providing coffee & tea, breakfasts and lunches at cost to students, the campus community as well as the wider Port Alberni community.

The college has agreed to rent the kitchen to the Students' Union and the service can be operated by one full time staff member, with support from existing Students' Union staff. Staff of the Students' Union are unionized with Local 2020 Construction, Maintenance and Allied Workers Canada. The addition of a union position would have great impact on the community.



## Are you in favour of increasing base membership fees by \$1 per credit?



- The service would be culturally inclusive, cost efficient, accessible and caring.
- Vending machines on campuses are owned by outside companies with high prices, and poor selection, especially in the summer, when they are most needed. The Students' Union could own and operate vending on campuses, instead.
- Adding these new services would need more staff hours as well as more resources,
- which means a modest increase to base fees is necessary to afford these changes.





“I didn’t know I was part of a Students’ Union”

This is something you will hear.

This is also a huge reason why NISU is trying to grow. So we have multiple touch points with all students know they are part of Union, know we love to feed them, know we advocate for them and know about their health and dental plan.

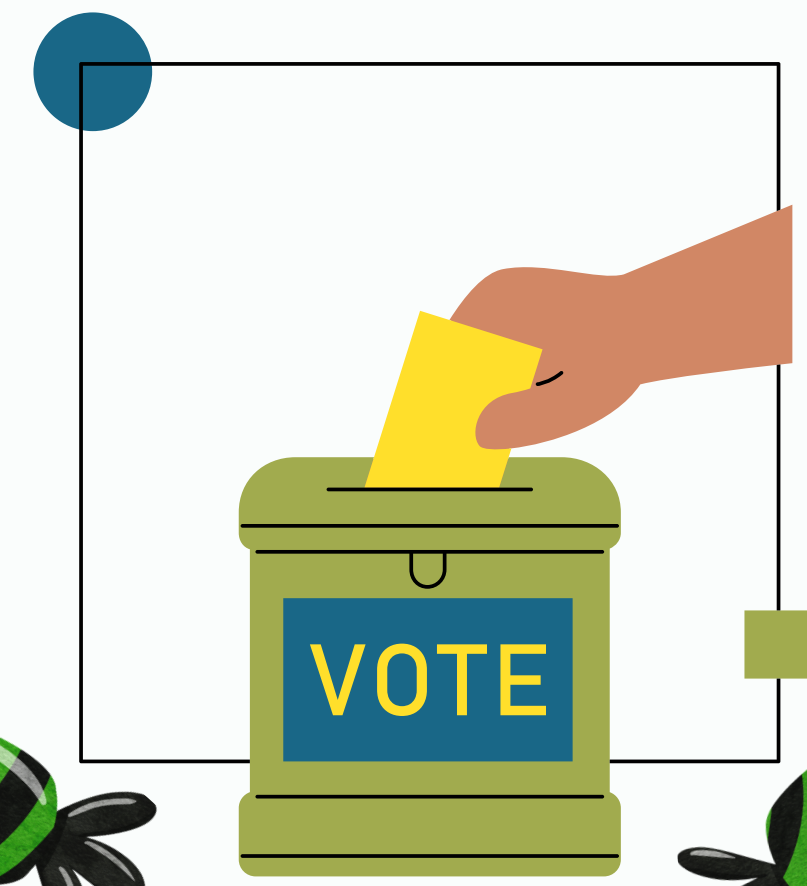
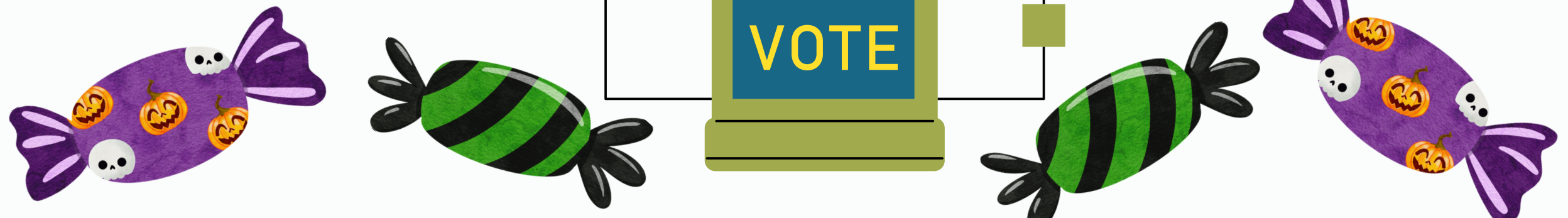






Call referendum October 16  
Voting days October 31, November 1 & 2.

Halloween we are running events on each campus.  
What is your availability?





# Call referendum October 16



## Voting days October 31, November 1 & 2.

**MOVING FORWARD**  
**Notice of Referendum**

VOTING DAYS OCTOBER 31, NOVEMBER 1 & NOVEMBER 2,  
VIA BALLOT TO YOUR @NORTHISLANDCOLLEGE.CA ADDRESS

NORTH ISLAND STUDENTS' UNION IS IN A POSITION TO GROW, WE NEED INCREASED FUNDING TO MAKE THESE IMPORTANT CHANGES TO OUR SERVICES.

IF EACH STUDENT CONTRIBUTES A SMALL INCREASE WE WILL HAVE THE COLLECTIVE POWER TO DO MORE.





**REFERENDUM**  
**Port Alberni Food Services**

VOTING DAYS OCTOBER 31, NOVEMBER 1 & NOVEMBER 2,  
VIA BALLOT TO YOUR @NORTHISLANDCOLLEGE.CA ADDRESS

AFTER THREE YEARS WITHOUT A CAFE ON THE PORT ALBERNI CAMPUS, THE STUDENTS' UNION CAN RUN THIS CAFE AS A SERVICE, PROVIDING FOOD AND BEVERAGES AT COST.

TO DO THIS, WE NEED A MODEST INCREASE TO FEES.





**REFERENDUM**  
**Vending**

VOTING DAYS OCTOBER 31, NOVEMBER 1 & NOVEMBER 2,  
VIA BALLOT TO YOUR @NORTHISLANDCOLLEGE.CA ADDRESS

VENDING MACHINES ON CAMPUSES ARE NOT GREAT. THEY ARE EXPENSIVE, HAVE POOR SELECTION, ARE NOT STOCKED DURING THE SUMMER, WHEN THEY ARE MOST NEEDED AND THERE ISN'T ANY FOOD IN CAMPBELL RIVER, AT ALL.

WITH A MINOR INCREASE TO FEES, NISU COULD OWN AND STOCK MACHINES, KEEPING COSTS DOWN AND BEING CONSISTENT







# Call referendum October 16

## Voting days October 31, November 1 & 2.

### REFERENDUM

# Port Alberni Food Services

VOTING DAYS OCTOBER 31, NOVEMBER 1 & NOVEMBER 2,  
VIA BALLOT TO YOUR @NORTHISLANDCOLLEGE.CA ADDRESS

THERE IS A SIMPLE KITCHEN WITH EQUIPMENT, DECENTLY RENOVATED SEATING AREA, IN THE CENTRE OF CAMPUS. WE WOULD SERVE BEVERAGES, SIMPLE HEARTY BREAKFASTS AND LUNCHES, AT COST.

WE WOULD EMPLOY ONE FULL TIME STAFF PERSON, CONTRIBUTING A STABLE EMPLOYMENT OPPORTUNITY TO THE COMMUNITY.





### REFERENDUM

# Vending

VOTING DAYS OCTOBER 31, NOVEMBER 1 & NOVEMBER 2,  
VIA BALLOT TO YOUR @NORTHISLANDCOLLEGE.CA ADDRESS

VENDING MACHINES ON CAMPUSES SUCK. THEY ARE EXPENSIVE, POOR SELECTION, NOT STOCKED DURING THE SUMMER, WHEN THEY ARE MOST NEEDED AND THERE ISN'T ANY FOOD IN CAMPBELL RIVER, AT ALL.

WITH A MINOR INCREASE TO FEES, NISU COULD OWN AND STOCK MACHINES, KEEPING COSTS DOWN AND BEING CONSISTENT



### REFERENDUM

# Spaces Fee

VOTING DAYS OCTOBER 31, NOVEMBER 1 & NOVEMBER 2,  
VIA BALLOT TO YOUR @NORTHISLANDCOLLEGE.CA ADDRESS

NISU HAS ENJOYED OFFICE SPACES PROVIDED BY THE COLLEGE SINCE 1991. WHILE THE COOPERATION IS APPRECIATED, IT HAS LEFT NISU WITH SMALLER THAN DESIRED SPACES.

WHEN THE STUDENTS' UNION HAS MORE SPACE, STUDENTS HAVE MORE SPACE.

SMALL SPACES UNDERMINE THE COLLECTIVE NATURE OF OUR WORK AND MAKE IT HARDER TO HOST CLUBS, RUN EVENTS AND MEET WITH ELECTED STUDENTS. BY STARTED TO SAVE NOW, NISU CAN PLAN TO HAVE LARGER SPACES IN THE FUTURE.







# Call referendum October 16

## Voting days October 31, November 1 & 2.

**MOVING FORWARD**  
**Referendum**

VOTING DAYS OCTOBER 31, NOVEMBER 1 & NOVEMBER 2,  
VIA BALLOT TO YOUR @NORTHISLANDCOLLEGE.CA ADDRESS

TWO QUESTIONS WILL BE ON THE BALLOT, OCTOBER 31, NOVEMBER 1, NOVEMBER 2.

ARE YOU IN FAVOUR OF IMPLEMENTING A SPACES FEE, OF \$0.50 PER MONTH?

ARE YOU IN FAVOUR OF INCREASING BASE MEMBERSHIP FEES BY \$1 PER CREDIT?



**MOVING FORWARD**  
**Referendum**

VOTING DAYS OCTOBER 31, NOVEMBER 1 & NOVEMBER 2,  
VIA BALLOT TO YOUR @NORTHISLANDCOLLEGE.CA ADDRESS

NISU WORKS HARD TO KEEP COSTS TO MEMBERS DOWN.

THE INTENT OF THESE FEES IS TO BUILD ON OUR FOOD SECURITY AND OUR FUTURE GROWTH.

WE ARE STRONGER, TOGETHER.

VOTE YES FOR NISU OCTOBER 31, NOVEMBER 1 & NOVEMBER 2.





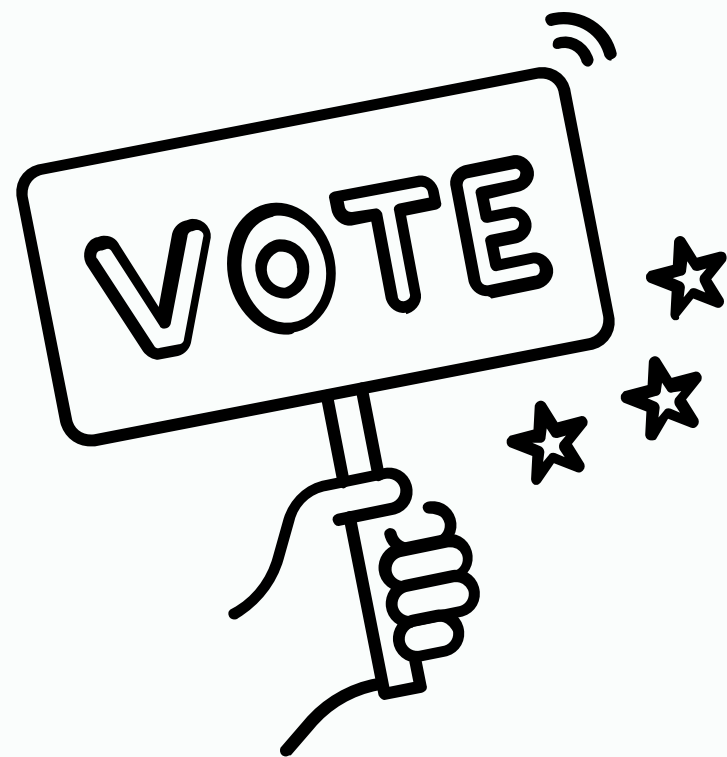
Call referendum October 16  
Voting days October 31, November 1 & 2.





Who has some time to connect with students and talk about this important referendum?

Next week we will be handing out our referendum rack cards and swag leading up to voting days.







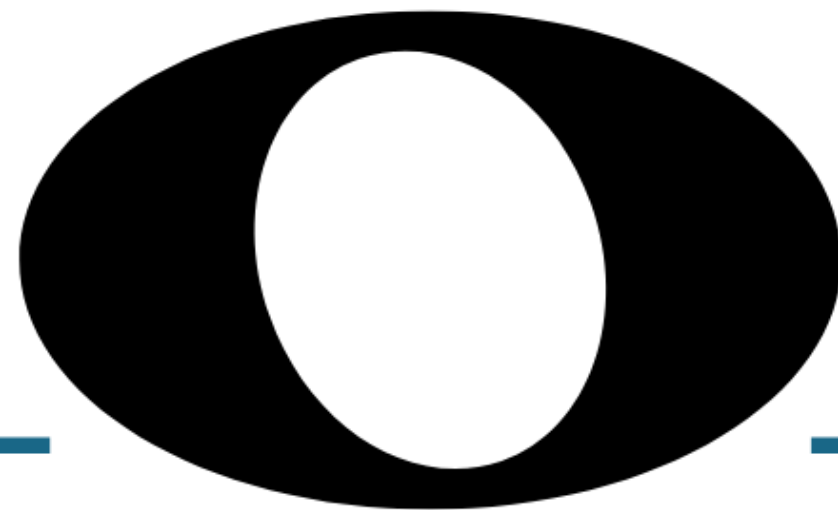
## Practice time!

Let's pair up and each take a turn being the student and the NISU rep as we field some practice questions and reactions.





**COMMITTEE  
OF THE  
WHOLE**



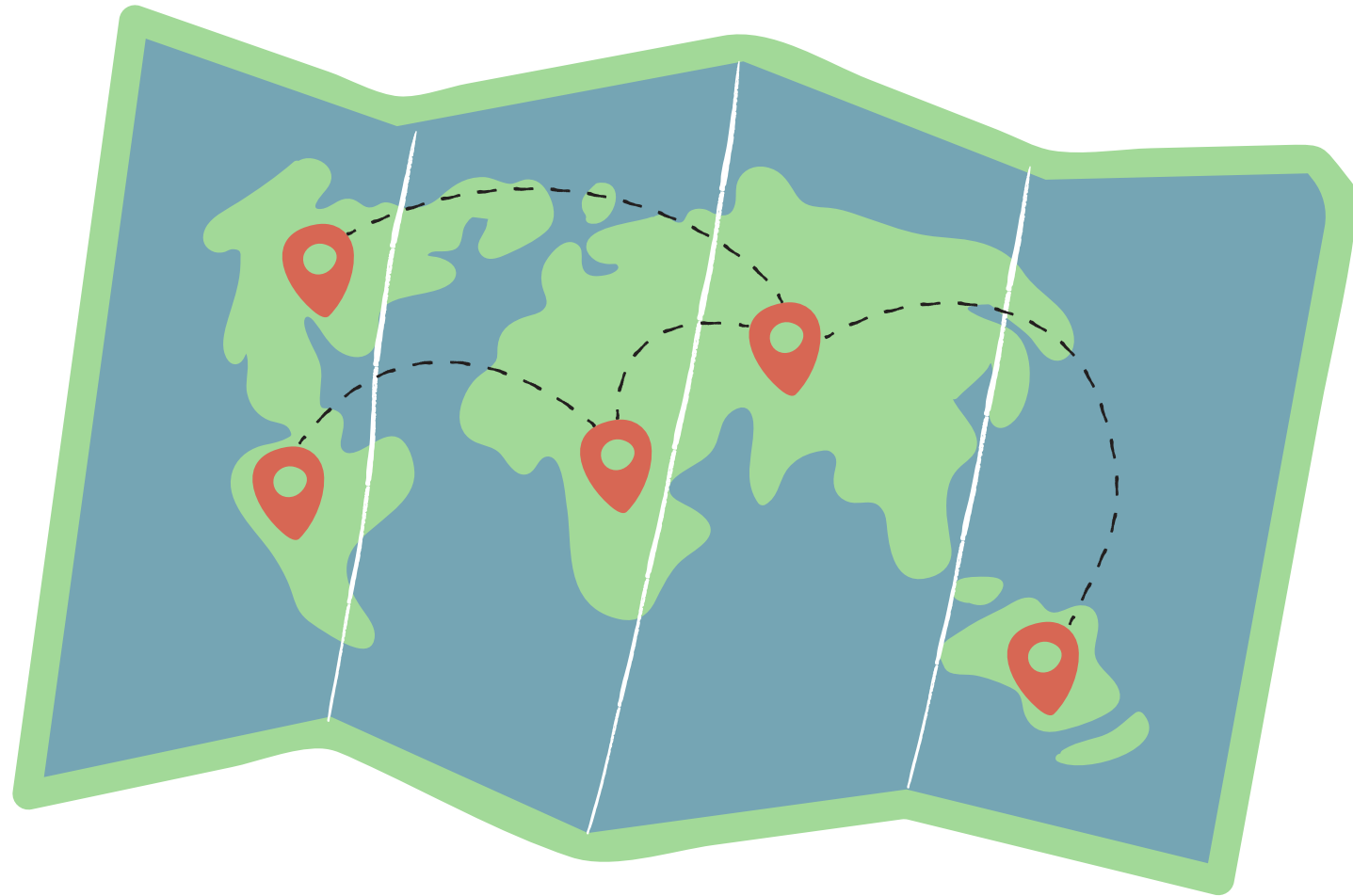
December 12  
5:00



# Meeting Map

## Committee of the Whole

### December 12, 2023



- MEETING GUIDELINES
- ACKNOWLEDGEMENT OF TERRITORIES
- GUEST, MAYOR, CITY OF COURTENAY; BOB WELLS
- CAFETERIA CLEANING SCHEDULE PLANNING
- CAFETERIA CHATS





December 12



### **Meeting guidelines**

All members of NICs College Community are bound by our Community Code of Conduct.

Please act with diligence and the safety of your fellow member in mind.

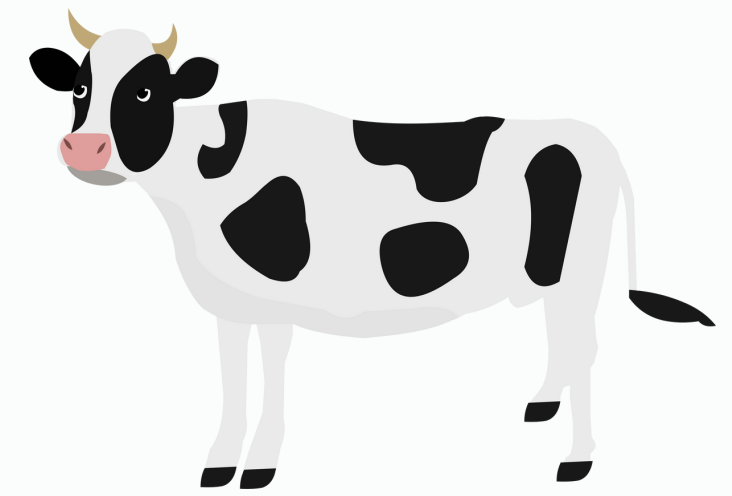
While in a NISU space, there is no time for inappropriate language.

Please act in a professional & respectful manner.

*North Island College is a vibrant community involved in teaching, learning, applied research, and other educational activities. The college is committed to fostering a culture of integrity, mutual respect, and responsible behaviours to provide a welcoming, safe, and inclusive environment for all.*



# December 12 Committee of the Whole



## **Hyflex Meeting guidelines**

Mute your microphone unless you're speaking.

Avoid cross-talking in the room; it makes it hard for online participants to hear.

We are all in this together.

Text 778 348 6478 for tech support

Feel free to turn off your camera while the team is presenting,  
please have it on during the discussion of the meeting, where possible.

Use the raise your hand function in Teams to help the meeting move smoothly.



|                                   |  |
|-----------------------------------|--|
| <b>Policy</b>                     | #3-06                                      |
| <b>Approved By:</b>               | Education Council                          |
| <b>Approval Date:</b>             | November 13, 2015                          |
| <b>Revision Date:</b>             | November 13, 2015<br>May 12, 2018          |
| <b>Effective Date:</b>            | May 12, 2018                               |
| <b>Date to be Reviewed:</b>       | 2023                                       |
| <b>Administrator Responsible:</b> | Executive Vice President<br>Academic & COO |

**COMMUNITY CODE OF ACADEMIC, PERSONAL AND  
PROFESSIONAL CONDUCT (CODE OF CONDUCT)**

*To find the Community Code of Conduct, find policy 3-06 on NICs website.*

If anything in a NISU space leaves you feeling uncomfortable please reach out to Rebecca or whomever you are most comfortable disclosing to.

We will support you.





North Island Students' Union is honoured to acknowledge territories of the combined 35 First Nations; Nuuchah-nulth, Kwakwaka'wakw and Coast Salish peoples, on whose unceded lands we learn, live and play





The Kwakwaka'wakw also known as the Kwakiutl "Kwak'wala-speaking peoples" are one of the indigenous peoples of the Pacific Northwest Coast. (Wikipedia.org. 2023)



Kwakwaka'wakw mask (19th century)

Total population  
3,665 (2016 census)

Regions with significant populations  
Canada (British Columbia)

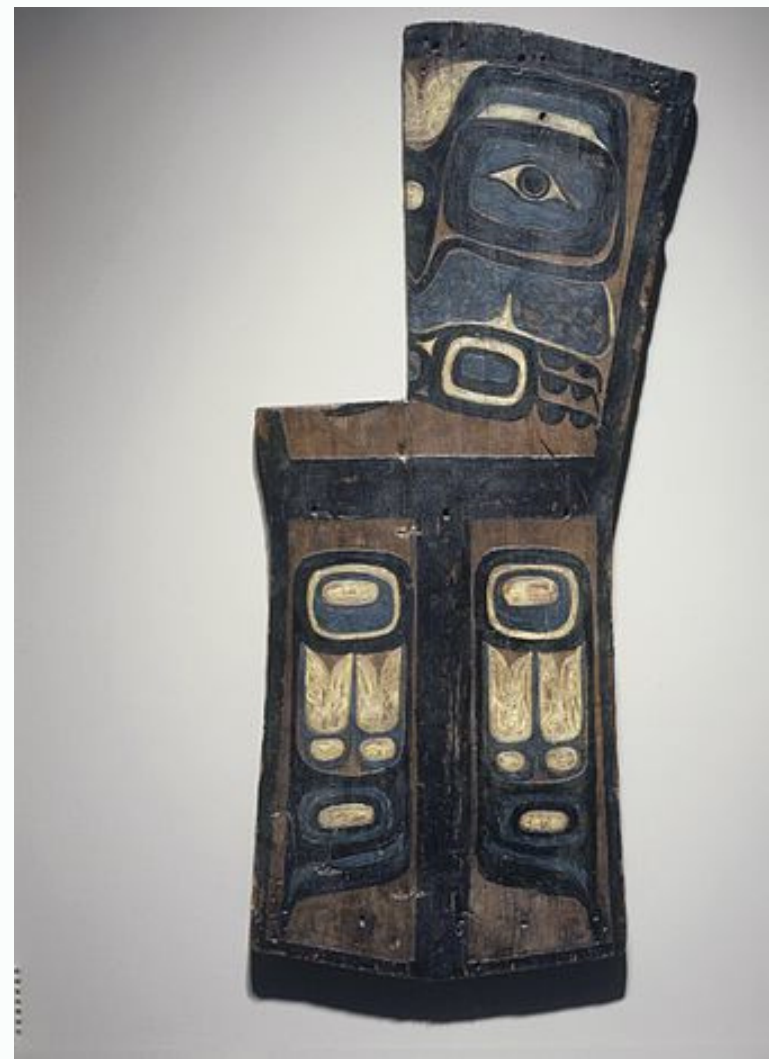
Languages  
English, Kwak'wala

Religion  
Christianity, Traditional Indigenous religion

Related ethnic groups

Haisla, Heiltsuk, Wuikinuxv





Grave Marker,  
Gwa'sala  
Kwakwaka'wakw  
(Native American),  
late 19th century,  
Brooklyn Museum.  
(Wikipedia.org. 2023)

Their current population, according to a 2016 census, is 3,665. Most live in their traditional territory on northern Vancouver Island, nearby smaller islands, including the Discovery Islands, and the adjacent British Columbia mainland. Some also live outside their homelands in urban areas such as Victoria and Vancouver. (Wikipedia.org. 2023)





Wawadit'la, also known as Mungo Martin House, a Kwakwaka'wakw "big house", with totem pole.

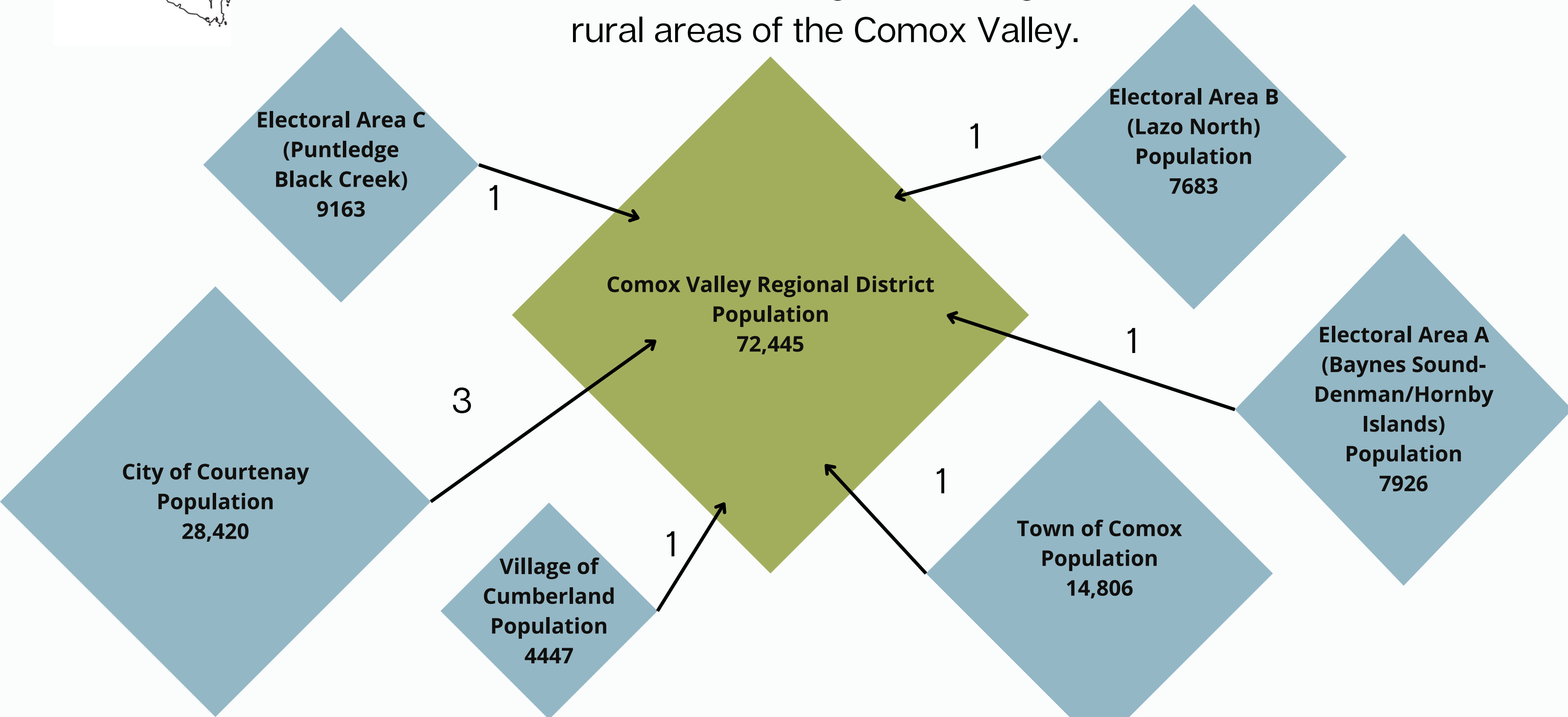
Built by Chief Mungo Martin in 1953. Located at Thunderbird Park in Victoria, British Columbia.

(Wikipedia.org. 2023)

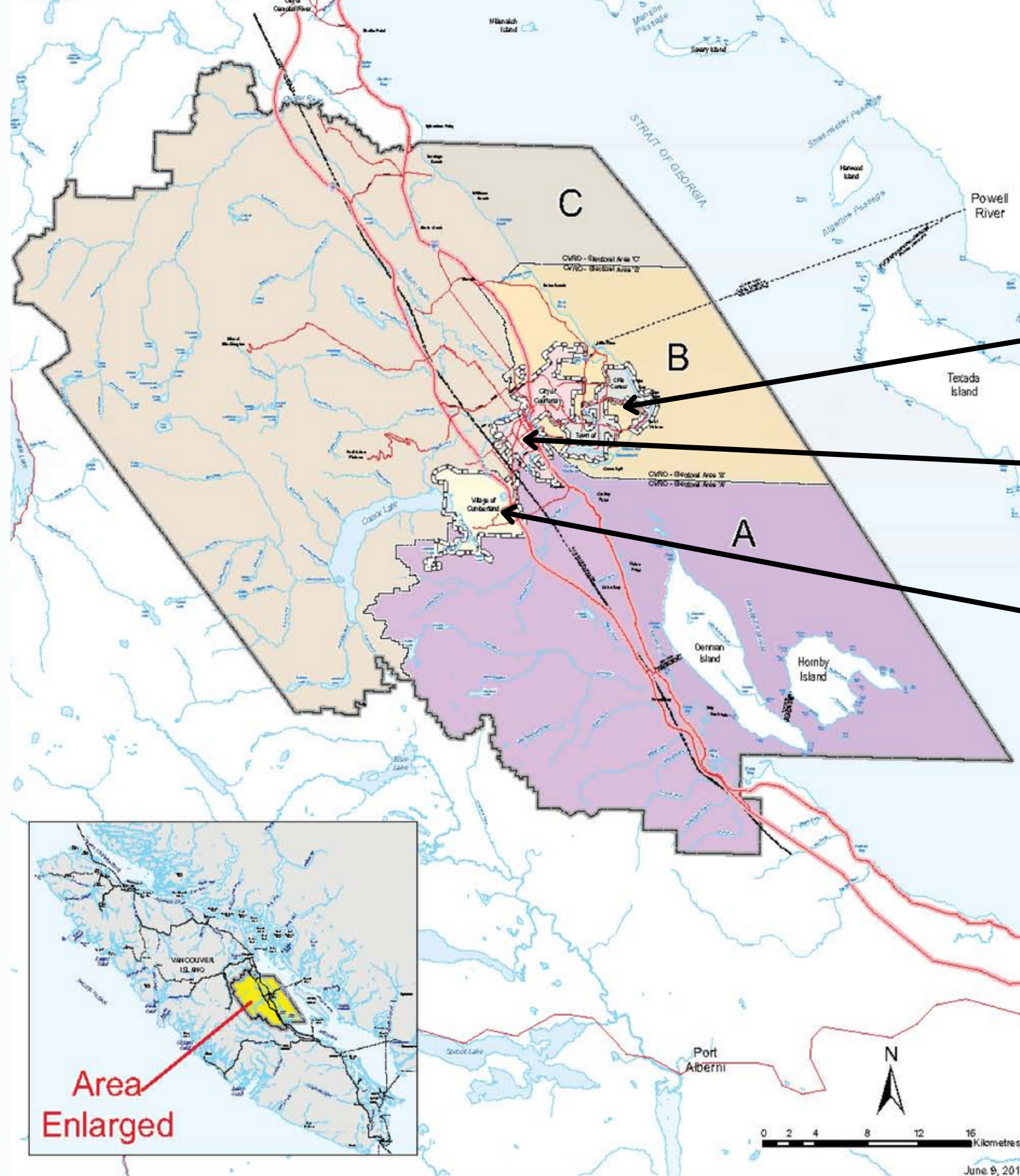
They are politically organized into 13 band governments. Their language, now spoken by only 3.1% of the population, consists of four dialects of what is commonly referred to as Kwak'wala. These dialects are Kwak'wala, 'Nak'wala, Gu'cala and Tlat'asi'kwala.

(Wikipedia.org. 2023)

The Comox Valley Regional District is a partnership of three electoral areas and three municipalities providing sustainable services for residents and visitors to the area. The local governments work collaboratively on services for the benefit of those living and visiting the diverse urban and rural areas of the Comox Valley.







# Map of Comox Valley Regional District

Comox

Courtenay

Cumberland

## Context Map

- Comox Valley Regional District Boundary
- \*Baynes Sound-Denman/Hornby Islands (Electoral Area 'A')
- Lazo North (Electoral Area 'B')
- Puntledge-Black Creek (Electoral Area 'C')
- City of Courtenay
- Town of Comox
- Village of Cumberland

\* Part 25 of the Local Government Act does not apply to lands within Islands Trust jurisdiction.







Please welcome  
Bob Wells  
Mayor of Courtenay

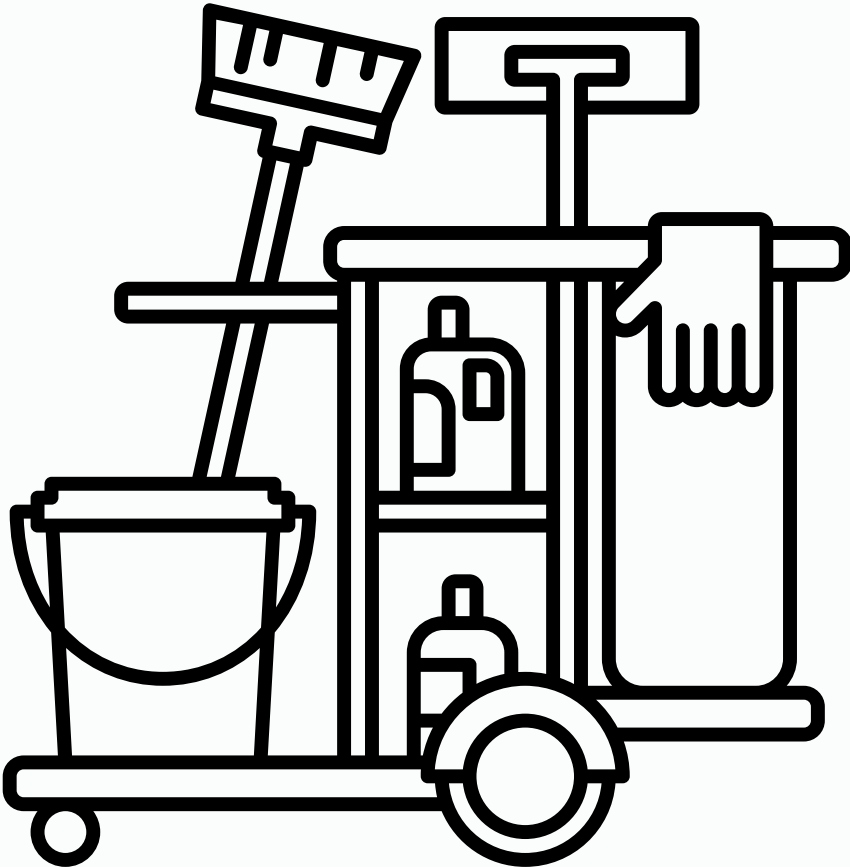




Carissa is the lead on kitchen cleaning


Please coordinate with her directly  
via Discord or text.  
(778) 585-6478

All elected students will receive \$22.45 per hour for work.



# Oh\* IS GETTING REAL








| MONDAY<br>11 | TUESDAY<br>12 | WEDNESDAY<br>13 | THURSDAY<br>14 | FRIDAY<br>15   | SATURDAY<br>16  | SUNDAY<br>17  |
|--------------|---------------|-----------------|----------------|--|---|---|
|              |               |                 |                | <p><b>Celebration</b></p>  <p>Here's to 10 great years and 10 more ahead!</p> <p>Pizza, crafts &amp; karaoke, 4 - 8</p> | <p><b>Go Time!</b><br/>Time to unpack entire kitchen into seating area - inventory, organising, cleaning<br/>Hours available 8 am - 8 pm<br/><b>Sign up for up to 8 hours below:</b><br/>8:00 - 4:00<br/><br/>12:00 - 8:00<br/><br/>Any variation that works for you:</p> | <p><b>Go Time!</b><br/>Time to unpack entire kitchen into seating area - inventory, organising, cleaning<br/>Hours available 8 am - 8 pm<br/><b>Sign up for up to 8 hours below:</b><br/>8:00 - 4:00<br/><br/>12:00 - 8:00<br/><br/>Any variation that works for you:</p> |



# Oh\* IS GETTING REAL



| MONDAY<br>18   | TUESDAY<br>19   | WEDNESDAY<br>20  | THURSDAY<br>21   | FRIDAY<br>22   | SATURDAY<br>23 | SUNDAY<br>24  |
|--|---|--|--|--|----------------|---------------|
| <p><b>Gas Fitters</b><br/>Disconnect all appliances<br/>Move out, where possible</p>  <p><b>NISU Ryan's Road</b></p> <p><b>11 am</b><br/>All Staff Meeting</p> | <p><b>Power washing</b></p>  <p><b>NISU Ryan's Road</b></p> <p><b>11 am</b><br/>All Staff Meeting</p> | <p><b>Kitchen Deep Clean</b></p>  <p><b>Bee Clean</b></p> | <p><b>Kitchen Deep Clean</b></p>  <p><b>Bee Clean</b></p> | <p><b>Kitchen Deep Clean</b></p>  <p><b>NISU Eats</b></p> | <p>Closed</p>  | <p>Closed</p> |



## Cafeteria Questions

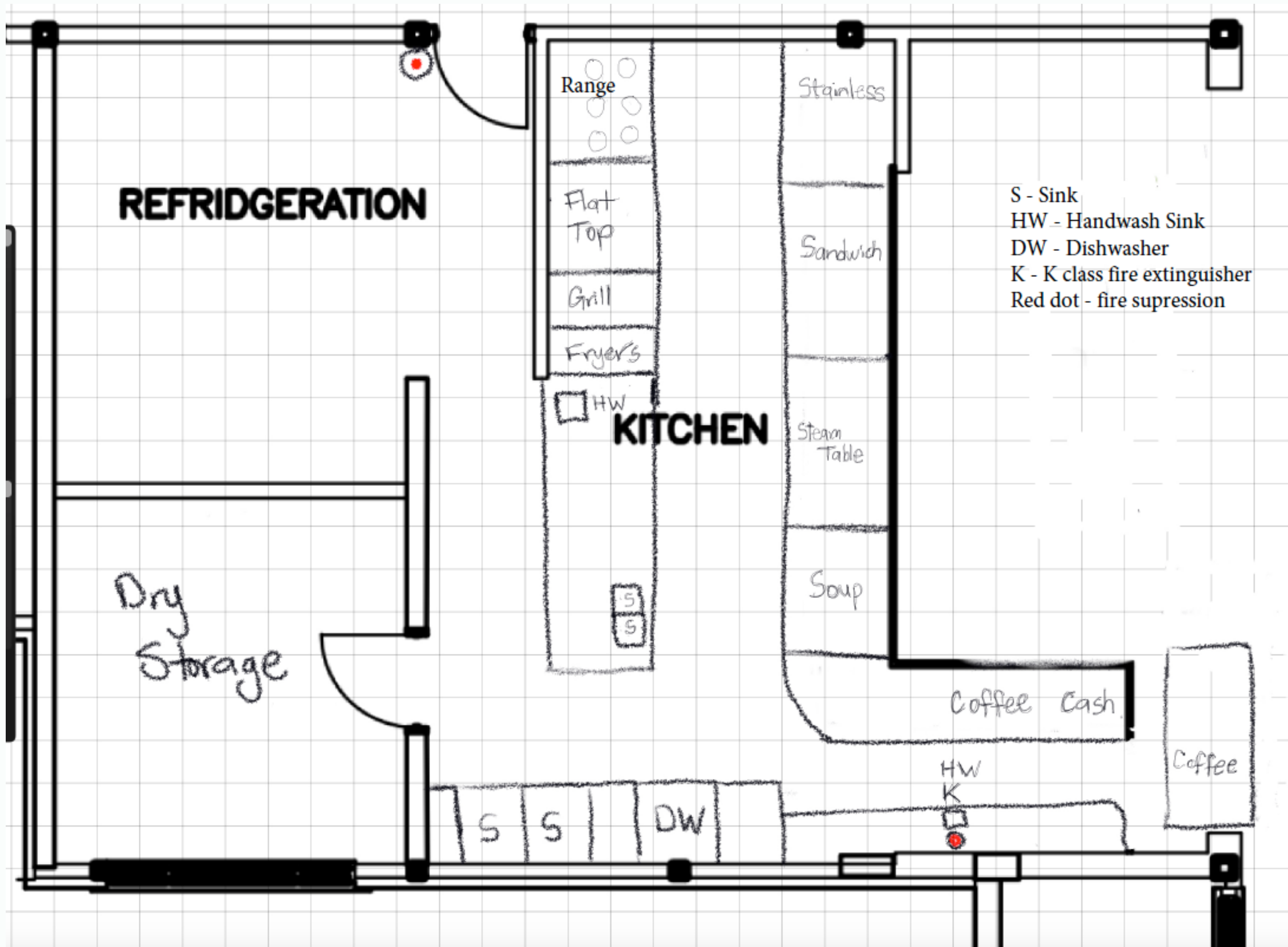
What are your favourite things you order?

What would you like to add to the menu?

What do you think would add good vibes to the cafeteria?

Do you have a pet peeve (something that bugs you) about the cafeteria?





**REFRIDGERATION**

Range

Flat Top

Grill

Fryers

HW

**KITCHEN**

Stainless

Sandwich

Steam Table

Soup

Coffee Cash

Coffee

Dry Storage

- S - Sink
- HW - Handwash Sink
- DW - Dishwasher
- K - K class fire extinguisher
- Red dot - fire suppression

S

S

DW

HW

K







Start setting up 2:30

Food arrives for 4:00

Karaoke 4:00 - 7:00

Snowflakes,  
pomanders,  
painting large papers to  
cover the windows.

**SOCIAL  
& CRAFT  
NIGHT**

Friday, December 15  
4:00 - 8:00 pm  
Tyee Lounge

More information: 778-585-6478 or [theoffice@nisu.ca](mailto:theoffice@nisu.ca)

This is offered as part of community of the Students' Union.

To learn more about services, community & advocacy of the Union,  
visit [nisu.ca](http://nisu.ca)